



# GAT MONTHLY MEMBERSHIP PROGRESS REPORT

Results as of: 9/30/2023

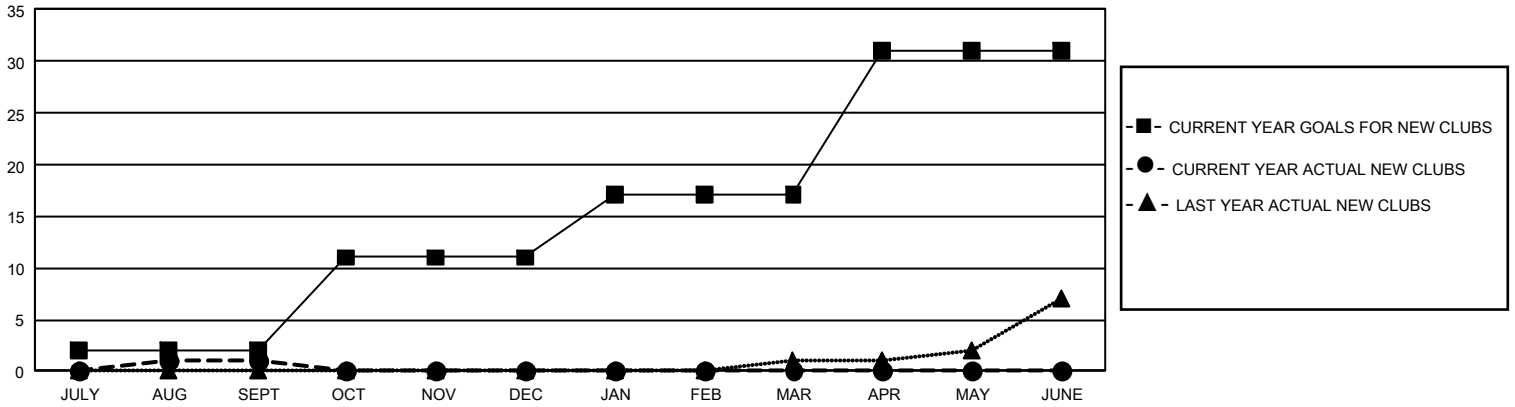
## GMT Constitutional Area 1, Group C

REPORT DOES NOT INCLUDE CLUBS IN UNDISTRICTED AREAS.

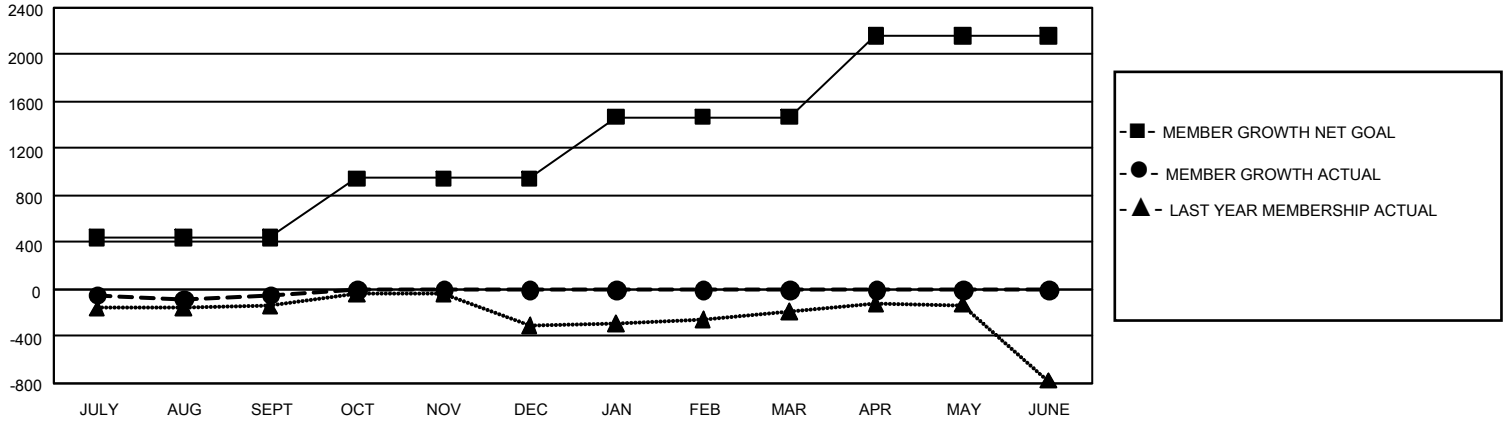
Clubs			
RESULTS FOR 2023-2024			
QUARTER	NEW CLUB GOAL	NEW CLUBS	DROPPED CLUBS
JULY/AUG/SEPT	6	1	4
OCT/NOV/DEC	27	0	0
JAN/FEB/MAR	18	0	0
APR/MAY/JUNE	42	0	0

Members			
RESULTS FOR 2023-2024			
QUARTER	MEMBER GROWTH NET GOAL	MEMBER GROWTH ACTUAL	DROPPED MEMBERS ACTUAL (including transfers)
JULY/AUG/SEPT	437	1,033	987
OCT/NOV/DEC	506	0	0
JAN/FEB/MAR	525	0	0
APR/MAY/JUNE	693	0	0

GOALS AND ACTUAL NEW CLUBS CUMULATIVE



GOALS AND ACTUAL MEMBERS CUMULATIVE



<b>DROPPED CLUBS: 4</b>  <b>DROPPED MEMBERS</b> DECEASED 157 CLUB CANCELLED 0 OTHER 837 <b>TOTAL 994</b>	427 CLUBS OF 1,400 ADDED 1 OR MORE NEW MEMBERS	<b>GENDER DISTRIBUTION</b> MALE 29,501 (69.14%) FEMALE 13,148 (30.81%) NON BINARY 2 (0.00%) PREFER NOT TO ANSWER 17 (0.04%)
	<a href="#">CLICK HERE FOR CUMULATIVE MEMBERSHIP DATA</a>	TOTAL FAMILY UNIT MEMBERS 8,826 FAMILY MEMBERS PAYING HALF DUES 4,480